

# Hurricane<sup>®</sup>

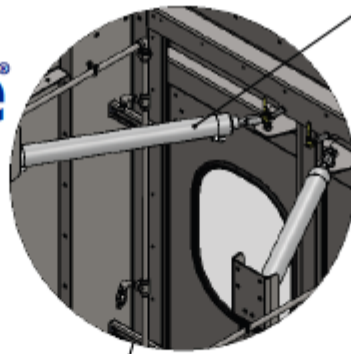
## Cart Washer

An Automation Dynamics Product



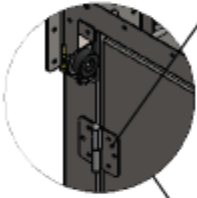
**OVER 20  
YEARS OF  
CART WASHING  
EXCELLENCE!**

**OUR EXISTING AND RETURN CUSTOMERS  
ARE THE TESTAMENT TO OUR  
SUCCESS IN THE INDUSTRY!**

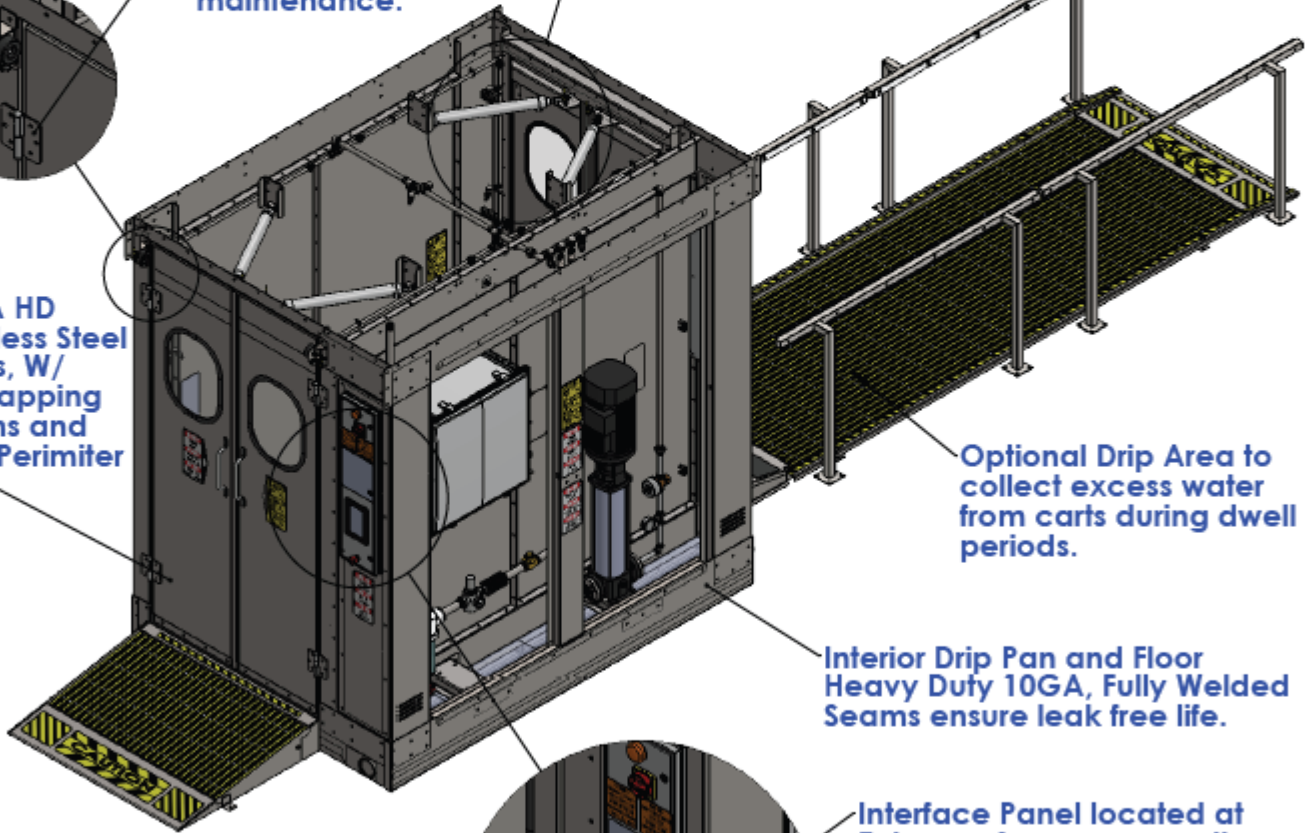


Robust 2" Dia. Stainless and Aluminium Air Cylinders ensure long life and reliable sealing of Closed Doors.

.25" Stainless Steel Plate Bolt on Hinges, for long life and simple maintenance.

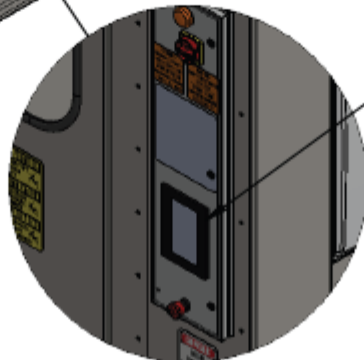


12GA HD Stainless Steel Doors, W/ overlapping Seams and tight Perimeter Seal



Optional Drip Area to collect excess water from carts during dwell periods.

Interior Drip Pan and Floor Heavy Duty 10GA, Fully Welded Seams ensure leak free life.



Interface Panel located at Entrance for easy operation.

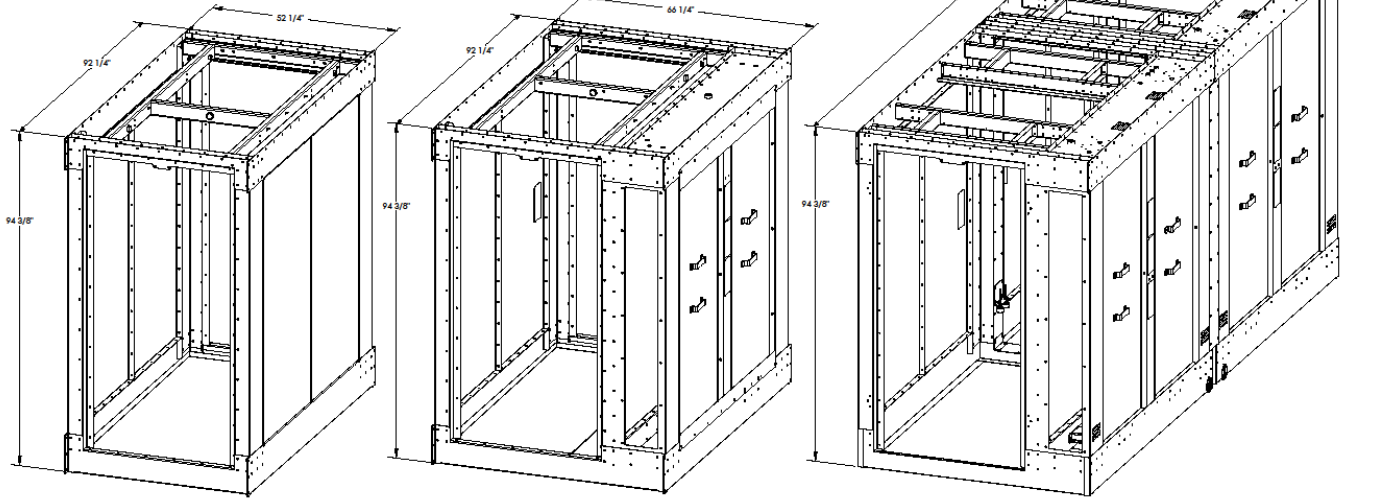
AD Controls built in-house and are ETL/CA certified.

**Manufactured by Automation Dynamics**  
**605 N High Street / Independence, MO 64050**

# Unit Custom Built for your Plant's needs!

## Base Options:

- 1200 - Narrow Unit w/ Remote Controls and Pumping Plant
- 1500 - Standard Unit w/ Onboard Controls and Pumping Plant
- 1500DD - Double Deep Unit for Two Carts

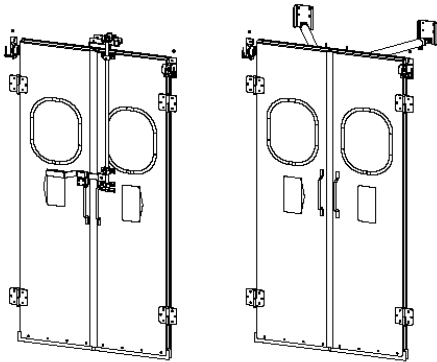


## Every Base includes:

- Heavy Duty Stainless Steel Construction
- Fully Welded Floor Pan to Prevent Leaking
- 3" Drain

Heavy Duty Wash Floor W/  
Optional Auto Eject for Finished Carts  
Even for the Double Deep!

## Choose Manual Doors or Air Operated Automatic Doors!



Optional Entrance/Exit Ramps  
for Above Ground Installations

Drip/Dwell Area for Two Carts!

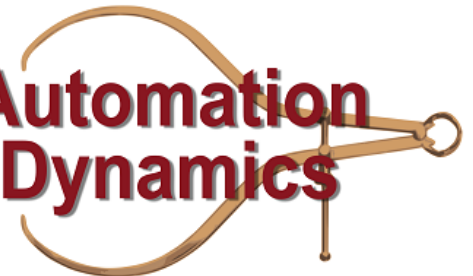


MADE IN THE **USA** by: **Automation**

Call Us Toll Free: (877) 482-7200

[www.adllc.com](http://www.adllc.com)

**Dynamics**





*"Developing Automation at  
the Speed of Technology"*

### **Automation Dynamics Cartwash Systems:**

- **AD equipment is made in the USA.**
- **Experience in Excellence and Number of years in service**
  - AD sold and installed our first Cart Wash system in early 2004, giving us years of experience in designing and installing in the laundry industry. Our existing and returning customers are the best references we have for our success in this industry.
- **Focus, the Cartwasher is one of our main product lines:**
  - The Cartwash is not just a product that we sometimes offer it is a major component that we manufacture and support as part of our daily business.
    - We offer in-house support inhouse as well as maintenance contracts to partner with our end customers to make sure the systems are running correctly.
- **Quality/Safety:**
  - The weight capacity of our system is up to 200 pounds per cart.
    - We use high quality Stainless Steel and heavy gauge where needed to ensure the systems last!
  - Quality of our components
    - We use only the best quality components in our equipment.
      - Pumps are Grundfos – this is the same pump the Bellagio hotel in Vegas uses to put on the water show every hour.
      - Our electronics are all name brand and supported throughout industry and the world.
      - We use either stainless plumbing or CPVC for the lines that require 100% chemical resistance.
      - All other components can be sourced through AD or locally.
        - We believe that the end user should not have to be held hostage by the equipment vendor for parts. We design the system so that many of the components can be bought from AD direct or off the shelf from local vendors.
    - All our units are evaluated complete in-house prior to shipping. Our internal testing involves.
    - Max Water Temperatures are 175-degree Fahrenheit.

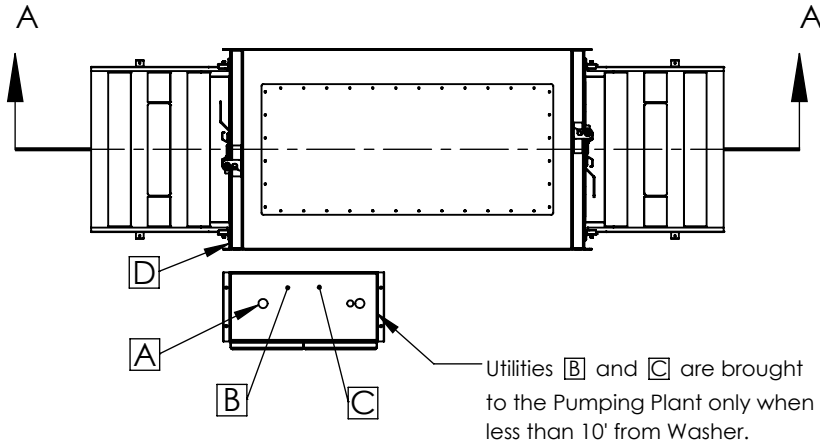
- Safety. We incorporate safety into our systems that do not allow the operation of the system if the unit doors are not closed and E-stops located on the entrance, inside and exit sides of the unit.
  - The unit interaction with the local production team if there is an issue is simple and easy to stop the system...it is also just as easy to restart the system once the area is safe and ready.
  
- **Intellectual Property, Technical Components and Software:**
  - AD is a 508A UL panel shop. This means we can build and put UL stickers on all the electrical equipment and components that we build.
    - This is an important thing for our end customers as they can be assured the electrical components and systems are built to UL standards and are safe to use in the environments we install.
  - AD develops and supports the HMI and PLC software that we use to operate our systems.
    - This means that if there is an issue you only must call AD for support and not worry about a third-party interface that we have no control over fixing or updating if needed.
  
- **Cycle Options, AD Sales and Customer Interface process:**
  - The Cartwash system has an HMI interface where the system is designed to allow the end user to program an amount of time for the various stages.
  
  - However, our system will come with a pre-set wash package that was used in the testing of the system prior to shipping.
    - High Pressure Rinse is set to 15 seconds. The cycle involves the system applying a high-pressure stream of water onto the carts surface with adjustable nozzles so that cart coverage can be achieved.
      - High Pressure Rinse achieves up to 200psi plus.
    - Disinfect is set to 15 seconds. The cycle involves the system applying an approved disinfectant that is applied to the cart surface.
      - Disinfect pressures are 40-60psi.
    - Blower Option is set to 45 seconds. The cycle involves the system applying a high volume of air from the roof mounted blower onto the cart's surface.
  
  - Based on the above timing the system can produce up to 30 carts per hour
  
- Cart Coverage/Cleaning action is divided across the cart at a rate of 50% Interior and 50% Exterior of the cart.

Drawn By: JSJ

Date Printed: 7/28/2016

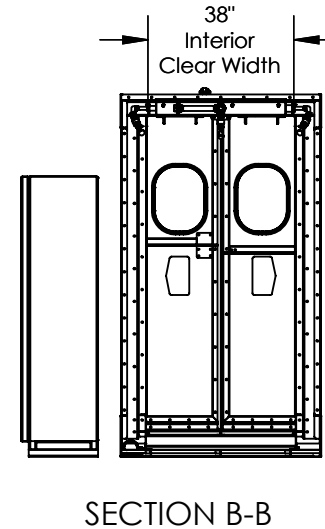
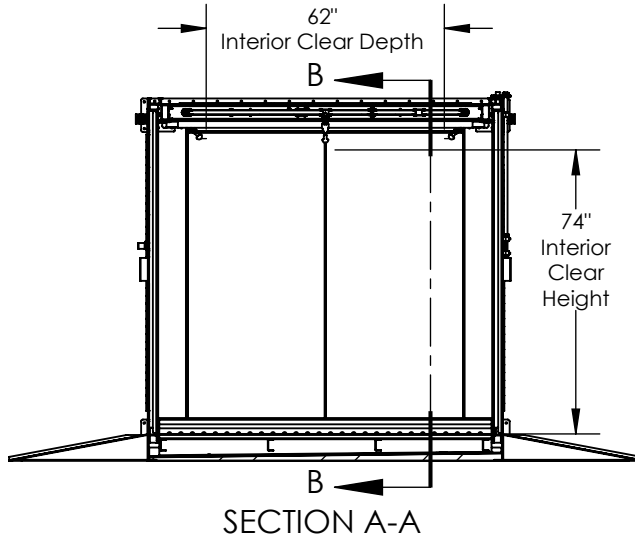
Date Created: 4/16/2014

# Automation Dynamics Model 1200 Cart Washer Interior Specifications



### Utility Requirements

- **A** Power for 5HP Water Pump, Minimum
  - 200/208v 3Ø , 25A; Additional 50A for Blower
  - 230/240v 3Ø , 25A; Additional 40A for Blower
  - 460/480v 3Ø , 12A; Additional 20A for Blower
  - 575/600v 3Ø , 10A; Additional 17.5A for Blower
  - Customer to provide Disconnects, size based on fusing requirements - Contact Automation Dynamics for more info.
- **B** 1/2" Compressed Air Line @ Working 80PSI
- **C** 1" Water Line @ 80PSI, 150° Range
- **D** Drainage from building, 3"NPT connection provided
  - Location varies, TBD at sale.



### Arrangement Shown

- Model 1200
- Manual Entry
- Manual Exit
- Feed Ramp
- Exit Ramp
- Skylight(Add-on)
- Front-Right, Drain
- No Cart Kick-out
- Remote Pumping Plant
- 5-Nozzle Spray Bar

General Notes: Unless Otherwise Noted

- All dimensions are inches.
- Deburr all sharp edges.
- Part mark in lower right corner.

Dimension Tolerances:

- Fractional:
- Angular:
- Decimal :

Engineering Approval:

JSJ -

Manufacturing Approval:

JMF -

Fabricated

Shear

Bandsaw

Drill/Punch/Tap

Break/Form

Roll

Grind/Deburr

Weld

Electrolysis

Paint/Coating

Assembly

Electrical

Packaging

QC/Testing

This drawing is the property of Automation Dynamics, Inc. and is furnished for informational purposes on a confidential basis, and neither the drawing, nor items thereon are to be reproduced or used in any manner not authorized in writing by an officer or agent thereof.



Material Part Number:

Finish:

Fabulous

Material:

Stainless Steel Construction

Description:

Automation Dynamics - Cartwasher Building

Part Number/File Name:

Cart Washer Building - Fact Sheet

605 North High Street  
Independence, MO 64050  
Phone: (816) 461-8989  
Fax: (816) 461-8889

FOR INTERNAL USE ONLY

Sheet Size:

A

Scale:

1:50

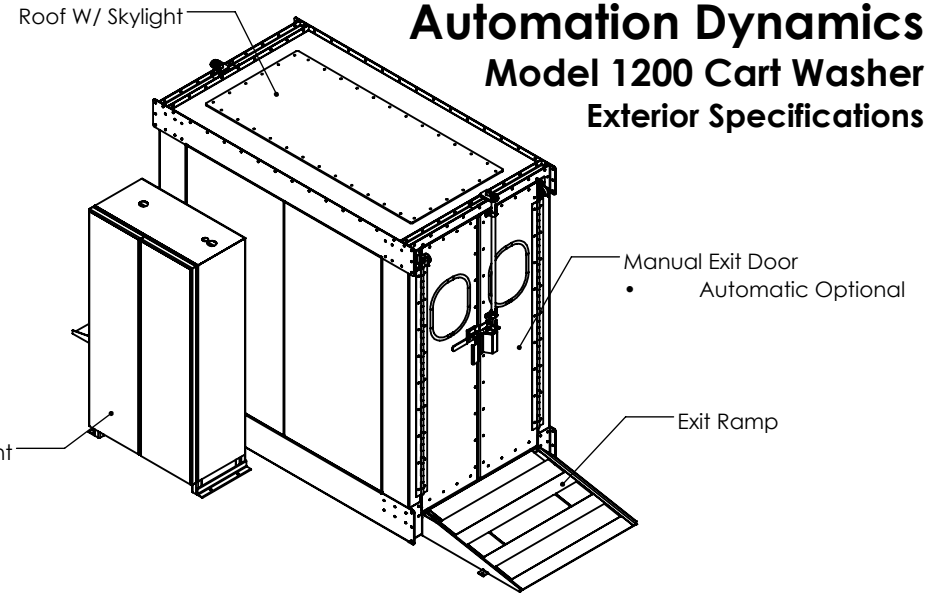
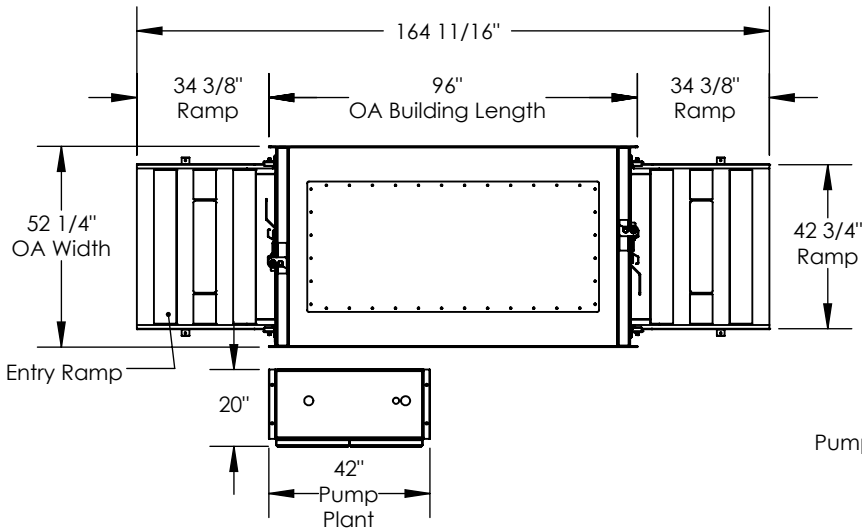
Page:

1 of 4

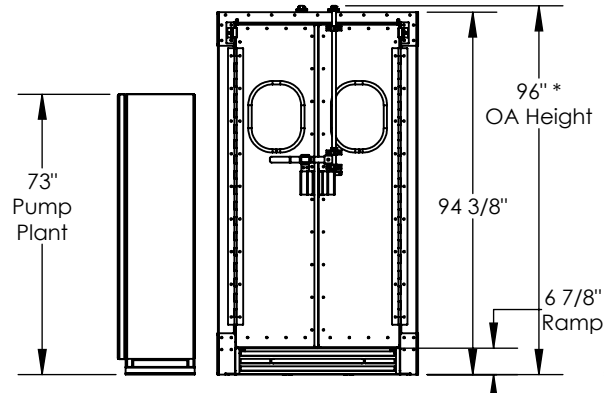
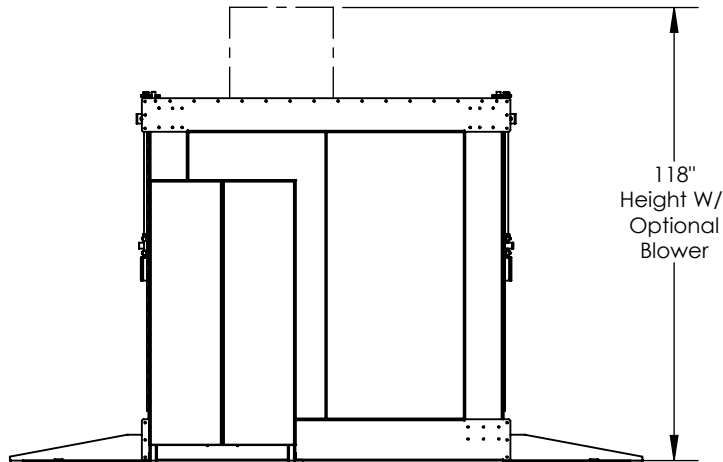
Drawn By: JSJ

Date Printed: 7/28/2016

Date Created: 4/16/2014



# Automation Dynamics Model 1200 Cart Washer Exterior Specifications



\*119" Building Height with Blower.

General Notes: Unless Otherwise Noted  
 - All dimensions are inches.  
 - Deburr all sharp edges.  
 - Part mark in lower right corner.

Dimension Tolerances:  
 Fractional:  
 Angular:  
 Decimal :

Engineering Approval:  
 JSJ -

Manufacturing Approval:  
 JMF -

Fabricated	<input checked="" type="checkbox"/>
Shear	<input type="checkbox"/>
Bandsaw	<input type="checkbox"/>
Drill/Punch/Tap	<input type="checkbox"/>
Break/Form	<input type="checkbox"/>
Roll	<input type="checkbox"/>
Grind/Deburr	<input type="checkbox"/>
Weld	<input type="checkbox"/>
Electrolysis	<input type="checkbox"/>
Paint/Coating	<input type="checkbox"/>
Assembly	<input type="checkbox"/>
Electrical	<input type="checkbox"/>
Packaging	<input type="checkbox"/>
QC/Testing	<input type="checkbox"/>

This drawing is the property of Automation Dynamics, Inc. and is furnished for informational purposes on a confidential basis, and neither the drawing, nor items thereon are to be reproduced or used in any manner not authorized in writing by an officer or agent thereof.



605 North High Street  
 Independence, MO 64050  
 Phone: (816) 461-8989  
 Fax: (816) 461-8889  
**FOR INTERNAL USE ONLY**

Material Part Number:	Finish: Fabulous	Sheet Size: A	Scale: 1:50
Material: Stainless Steel Construction		Description: Automation Dynamics - Cartwasher Building	
Part Number/File Name: Cart Washer Building - Fact Sheet		Page: 2 of 4	

Drawn By: JSJ

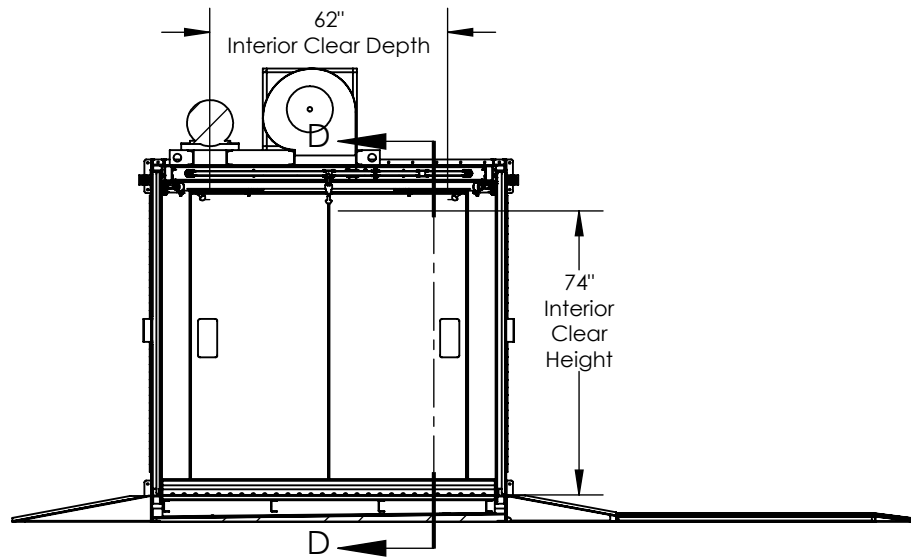
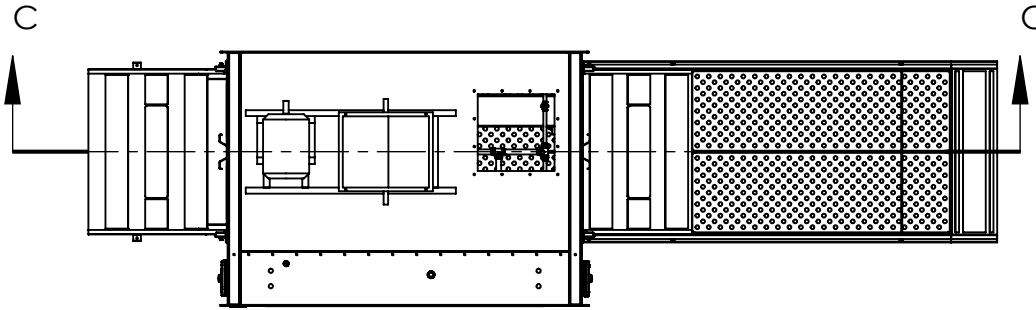
Date Printed: 7/28/2016

Date Created: 4/16/2014

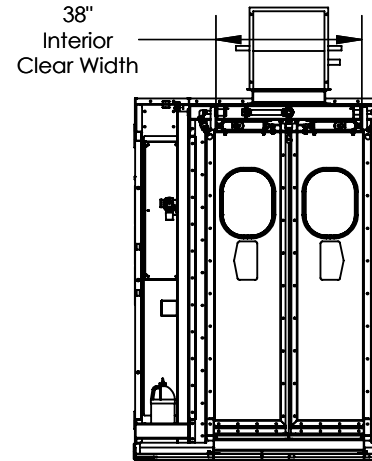
# Automation Dynamics Model 1500 Cart Washer Interior Specifications

## Utility Requirements

- [A] Power for 5HP Water Pump, Minimum
  - 200/208v 3Ø , 25A; Additional 50A for Blower
  - 230/240v 3Ø , 25A; Additional 40A for Blower
  - 460/480v 3Ø , 12A; Additional 20A for Blower
  - 575/600v 3Ø , 10A; Additional 17.5A for Blower
  - Customer to provide Disconnects, size based on fusing requirements - Contact Automation Dynamics for more info.
- [B] 1/2" Compressed Air Line @ Working 80PSI
- [C] 1" Water Line @ 80PSI, 150° Range
- [D] Drainage from building, 3"NPT connection provided
  - Location varies, TBD at sale.



SECTION C-C



SECTION D-D

## Arrangement Shown

- Model 1500
- Automatic Entry
- Automatic Exit
- Feed Ramp
- Exit Ramp W/ Drain Pan
- 10HP Blower
- Front-Right, Drain
- Cart Kick-out
- 5-Nozzle Spray Bar

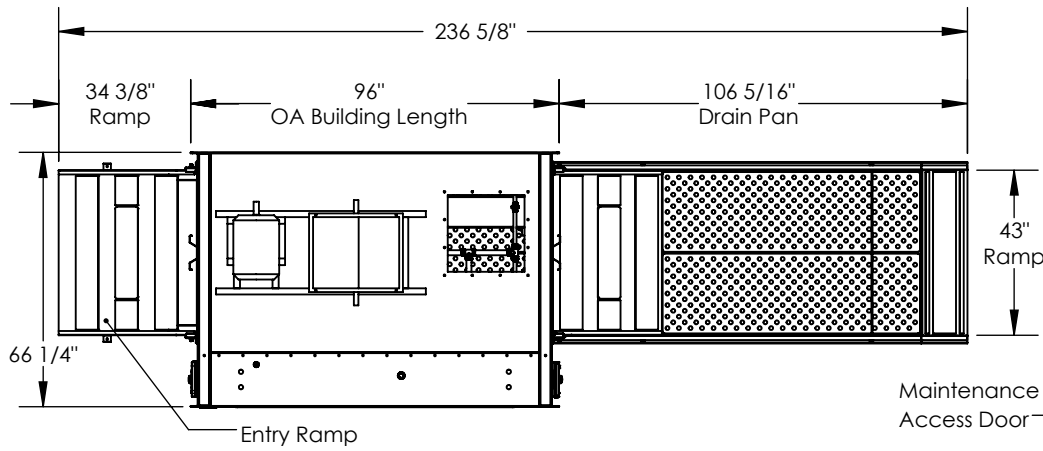
General Notes: Unless Otherwise Noted - All dimensions are inches. - Deburr all sharp edges. - Part mark in lower right corner.	Fabricated <input checked="" type="checkbox"/>	This drawing is the property of Automation Dynamics, Inc. and is furnished for informational purposes on a confidential basis, and neither the drawing, nor items thereon are to be reproduced or used in any manner not authorized in writing by an officer or agent thereof.		605 North High Street Independence, MO 64050 Phone: (816) 461-8989 Fax: (816) 461-8889 <b>FOR INTERNAL USE ONLY</b>
	Dimension Tolerances: Fractional: Angular: Decimal :	Shear Bandsaw Drill/Punch/Tap Break/Form Roll Grind/Deburr Weld Electrolysis Paint/Coating	Material Part Number: Finish: Fabulous	
Engineering Approval: JSJ -	Assembly Electrical	Description: Automation Dynamics - Cartwasher Building		Page: 3 of 4
Manufacturing Approval: JMF -	Packaging QC/Testing	Part Number/File Name: Cart Washer Building - Fact Sheet		



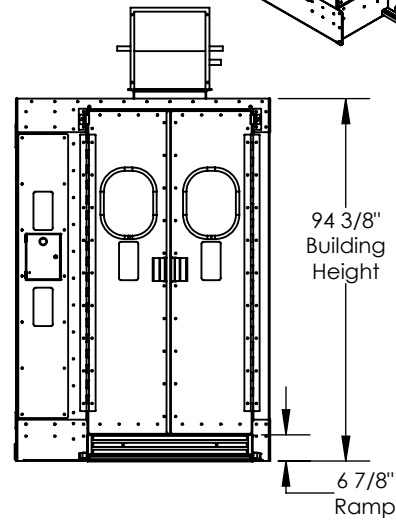
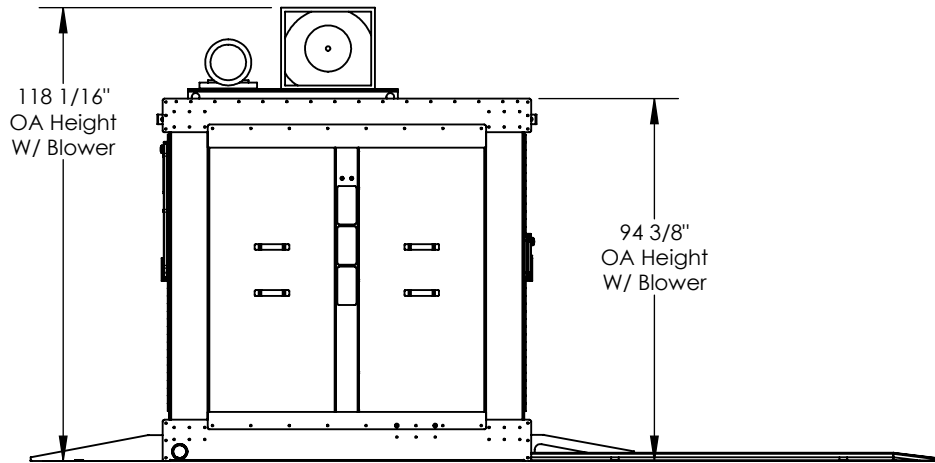
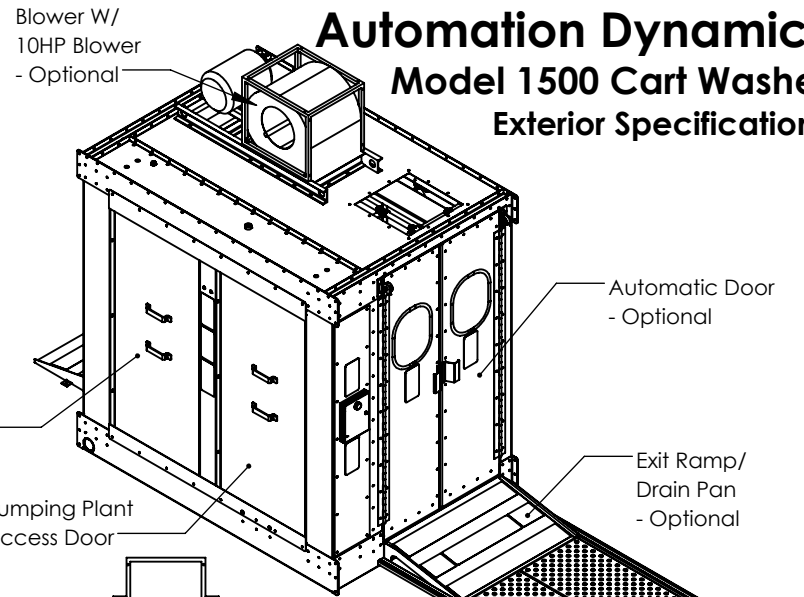
Drawn By: JSJ

Date Printed: 7/28/2016

Date Created: 4/16/2014



# Automation Dynamics Model 1500 Cart Washer Exterior Specifications



General Notes: Unless Otherwise Noted  
 - All dimensions are inches.  
 - Deburr all sharp edges.  
 - Part mark in lower right corner.

Fabricated	<input checked="" type="checkbox"/>
Shear	<input type="checkbox"/>
Bandsaw	<input type="checkbox"/>
Drill/Punch/Tap	<input type="checkbox"/>
Break/Form	<input type="checkbox"/>
Roll	<input type="checkbox"/>
Grind/Deburr	<input type="checkbox"/>
Weld	<input type="checkbox"/>
Electrolysis	<input type="checkbox"/>
Paint/Coating	<input type="checkbox"/>
Assembly	<input type="checkbox"/>
Electrical	<input type="checkbox"/>
Packaging	<input type="checkbox"/>
QC/Testing	<input type="checkbox"/>

This drawing is the property of Automation Dynamics, Inc. and is furnished for informational purposes on a confidential basis, and neither the drawing, nor items thereon are to be reproduced or used in any manner not authorized in writing by an officer or agent thereof.



605 North High Street  
 Independence, MO 64050  
 Phone: (816) 461-8989  
 Fax: (816) 461-8889  
**FOR INTERNAL USE ONLY**

Dimension Tolerances: Fractional: Angular: Decimal :	Material Part Number:	Finish: Fabulous	Sheet Size: A	Scale: 1:50
Engineering Approval: JSJ -	Material: Stainless Steel Construction		Description: Automation Dynamics - Cartwasher Building	
Manufacturing Approval: JMF -	Part Number/File Name: Cart Washer Building - Fact Sheet			Page: 4 of 4



*"Developing Automation at the Speed of Technology"*

<b>Cart Washer Customers:</b>	<b>Type CW</b>	<b>Phone</b>	<b>Contact</b>	<b>Date Installed</b>
Balfurd Linen Service-Tipton Pennsylvania	Custom	800-992-0003	Phillip Gurganis	Apr-20-2004
Faultless Healthcare-Broadway-St. Louis, Missouri	5000	816-421-2373	Seth Morrison	Sept-12-2005
Stericycle-Virginia	Twister	804-317-6598	Jeff Paden	Jan-18-2008
Admiral- Houston	5000	713-400-7610	Mihai Bradacs	Aug-25-2014
Lavanett-CA	1500 -Automatic	506-739-2597	Serge Martin	Dec-1-2014
Principle-CA	1500-Manual	204-856-4303	Michelle Espenell	Jan-22-2015
Crothall-Phoenix	5000	602-437-1051	Gary Heckman	Aug-1-2015
HCSC - Allentown, Pennsylvania	5000	570-459-0762	Bill Bretz	Aug-8-2015
Reino-Gibbonsberg-Ohio	5000	419-637-2151	Ron Schlea	May-11-2015
Mercy Healthcare-Springfield, Missouri	1200 -Manual	417-887-5014	Rich Garland	Nov-1-2015
AmeriTex-Omaha, Nebraska	1500 -Automatic	402-592-4975	Brad Goldstrom	Nov-5-2015
Madison United Healthcare-Madison, Wisconsin	5000	608-257-6751	TJ Peterson	Sep-7-2016
Faultless Linen-Kansas City, Missouri	1500 -Automatic + Instant Kill	(816) 483-1970	Gene Ray	Jan-25-2016
AlSCO-Portland	1500 -Automatic	503-283-2233	Barb Eaton	Feb-15-2017
Linen King-Tulsa	1500 -Automatic	918-245-7333	Gerald Snider	May-15-2017
Morgan - Toledo, OH	1500 -Automatic	312-373-8849	Tony Blue	Aug-17-2017
Morgan - Buffalo, NY	1500DD -Automatic	716-579-4856	Steve Sosnowski	Sep-13-2017
Morgan - Los Angeles, CA	1500DD -Automatic	213-494-7446	Jose Martinez	Oct-6-2017
Morgan - Dayton, OH	1500 -Automatic	937-223-5241	Jason Lauder milk	Oct-20-2017
Mosaic Life	1500 -Automatic	816-271-6798	John Glenn	March-15-2018
Faultless Healthcare-Trudeau-St. Louis - Retail	1500 -Automatic + Instant Kill	816-421-2373	Seth Morrison	July-12-2018
Faultless Healthcare-Trudeau-St. Louis - Acute	1500 + Instant Kill	816-421-2373	Seth Morrison	July-12-2018
Sitex Linen-Henderson -Kentucky	1500 -Automatic	270-631-2215	Jon Sights	November-1-2018
Medico - Los Angeles, CA	7000	213-505-1280	Steve Leffler	November-30-2018
Service New Brunswick St. Johns New Brunswick	6000 + Instant Kill	506-635-1325	Keith MacKen	January-20-2019
Mission Linen, Bakersfield, CA	1500 -Automatic	661-323-6056	David Wright	March-1-2019
Mission Linen, Salinas, CA	1500 -Automatic	661-313-6056	David Wright	March-1-2019

North Star Linen, Somerville, MA	1200 -Manual	617-623-1200	Leo Villari	August-1-2019
Commonwealth-Roanoke, VA	1500DD -Automatic+ Instant Kill	540-224-3103	Jim Buchbinder	October-1-2019
CleanCare-Pittsburg, PA	6000 +Instant Kill	412-323-7979	Steve Davis	November-1-2019
Cleveland Clinic	6000 +Instant Kill	978-697-3048	Gerard O'Neill	November-12-2019
Balfurd Linen	1500-Automatic	814-237-7661	Dave Manter	Febuary-24-2020
MDAHS	6000 +Instant Kill	313-834-6500	David Hass	June-3-2020

**Note:** 1500-Includes pumping plant. 1200-Remote pumping plant. Available in Auto or Manual. Tunnel 5000-Chain Driven.

**For more information visit-[www.adllc.com](http://www.adllc.com) or  
Call 877-482-7200**

# Automation Dynamics

*"Developing Automation at the Speed of Technology"*

Model 1200 and 1500 Cartwash Videos



Josh Frankeberger on Automation Dynamics Cart Washers.



The Automation Dynamics Hurricane 1500 Cart Washer offers Strength and simplicity in a small footprint Cart Washer that can easily fit in your laundry.

# Automation Dynamics

*"Developing Automation at the Speed of Technology"*



Automation Dynamics testing laundry carts for cleanliness before and after they come out of your cart washer using an ATP tester.



Why Brad Goldstrom, owner of AmerTex Laundry in Omaha, Nebraska purchased an Automation Dynamics Hurricane 1500 laundry cart washer.

# Automation Dynamics

*"Developing Automation at the Speed of Technology"*



Earl Eichen, owner of Lavanett in Montreal Canada, explains the ease of working with Automation Dynamics when creating a custom cart washer that must fit in a nearly impossibly small space in the Edmundson Hospital in Edmundson, Canada.



How the small foot print Automation Dynamics Hurricane 1500 Cart washer installed at Edmundson Hospital, in Edmundson, Canada washes and disinfects the hospital's laundry carts.

# Automation Dynamics

*"Developing Automation at the Speed of Technology"*



John Glenn of Mosaic shares his experience with the Automation Dynamics overall sales, installation process as well as his satisfaction of the unit's performance after install.



*"Developing Automation at  
the Speed of Technology"*

## **Attachment A:**

### **Automation Dynamics: Machine Installation, Startup and Training Services**

**Note:** Due to fluctuating travel costs, Automation Dynamics' labor expenses will be quoted on a per job basis.

#### **All Equipment Labor Rate:**

- \$1000.00 per day per technician for additional days requested or required due to purchase delays.

#### **Expenses will include one or more of the following:**

- Airfare
- Rental car
- Mileage
- Hotel
- Meals

#### **Installation:**

- The Automation Dynamics will place the equipment in the position in which it is to be installed.
- The Customer/Purchaser to provide the necessary utilities, power, plumbing, air pressure, and roofing to the installation site prior to the hook-up and installation date.
- Unless otherwise noted in the sales order, all expenses of cranes, forklifts and manpower needed to transfer the Automation Dynamics, equipment from the carrier to the final installation site are the Purchaser's responsibility.
- The Purchaser will provide the necessary personnel and equipment to assist the Automation Dynamics Supervisor in the installation and final hook-up of the equipment.
- The customer is responsible for meeting all local, state and national codes relating to the equipment at the Purchaser's premises.
- The Purchaser understands that if the installation is delayed while the an Automation Dynamics technician or supervisor is on site due to the "End User or the Purchaser" not

**605 N. High St., Independence, MO. 64050 Ph – 816-461-8989 Fx – 816-461-8989**

**www.adllc.com**

being prepared for the installation and a return trip is required, then the Purchaser understands and agrees that the return trip will be billed as a "PO Trip" at the rates listed above.

**Automation Dynamics upon completion of the installation and startup employee training:**

- Upon completion of the training customer must sign form agreeing that all work and training has been completed to the Customer/Purchaser's satisfaction.
- The Purchase will insure that the personnel to be trained are available without distraction during the training period.
- These startup dates and training services are to be conducted during the normal working hours, Monday through Friday, not including holidays.

**Warranty:**

- For full details of warranty see attachment B.



*"Developing Automation at  
the Speed of Technology"*

## Attachment B

### Automation Dynamics, LLC Standard Limited Warranty

We would like you to know that each manufacturer we buy from has a proven record of accomplishment in customer service as referenced to warranty items. We also make an effort to purchase as many components from national suppliers like W W Granger, etc. for your convenience. However, items or parts that have obvious abuse or misuse will not be approved for warranty exchange. All items will be subject to the prospective manufacturer's approval process. We as distributors of the item or part do not have the final authorization to issue warranty.

EXPRESS LIMITED WARRANTY. Automation Dynamics LLC warrants that: (a) the software will perform substantially in accordance with the accompanying Product Manual(s); and (b) that all labor for off-site technical support on new equipment (excluding repair jobs) is free for a period of 90 days from the date of installation; and (c) any CountMaster™ hardware will be free from defects in materials and workmanship under normal use and service for a period of 1 year from the date of receipt.

- Freight charges involved in warranty repair or exchange are NOT included.

#### CUSTOMER REMEDIES.

Automation Dynamics as an OEM Company depends on the "parts manufacturer's warranty" and we pass this warranty along through the sales cycle. This is common among manufacturing processes. As the reseller of the components and parts that comprise the CountMaster™ product we will do our best to represent the warranty claim on our customers' behalf.

Warranty support is as follows: Support is divided between hardware and software.

#### **Hardware: (all hardware carries a one-year warranty from the date of purchase).**

- **Computer Hardware support procedure:**
  - Computers will be handled on a repair basis. Ship the unit to us freight prepaid round trip and we will repair the unit or replace it and ship it back. If the repaired computer needs to have the software reloaded and the network set up, there will be a charge of at our standard hourly above this statement of warranty. We will fax a request confirmation on such set up fees to clarify charges are approved and the customer has proper notice.
- **Other Hardware**

- Structural components, such as the table and accumulator bin, will be repaired by the company on site at no charge within the first year, except for customer abuse and acts of God.
- Electronic components like electric eyes, solenoids, and PLCs need to be carefully inspected and tested by the customer before assuming they are bad. Often these components will need adjusting or cleaning to work properly. Electronic components and other hardware items will be sent to Automation Dynamics for first review and if necessary, we will ship them back to the original manufacture for warranty review. See below for manufacture procedure and liability statements.
- **Software** support is via a dial up modem. Customer must provide a successful connection between a telephone line and modem at their location. At times, it may be necessary to transfer data via tape backups and other storage devices through the mail.
  - The software will work as documented in the manual, and if not, fixes will be provided quickly and placed on your unit via modem at not charge.
  - NOTE: If problems, other than detailed above occur, such repairs will be chargeable, unless such items are covered under your support agreement.
- MANUFACTURE'S LIMITATION OF LIABILITY  
The manufacture has four options; such liability is limited, at the exclusive option of the manufacturer to either:
  - Denied warranty and issue a report why.
  - Approve the part for Replacement.
  - Approve the part for Repair and repair the part.
  - Verify the part is not bad as claimed and return it as usable.

**If we have mailed to you a replacement part (non-loaner) before we know if your part is covered under warranty by the manufacture, one of the following will occur:**

- If the warranty item is approved for replacement by the manufacture and they have shipped us a replacement part, we will put the new item in our inventory and you may keep the item you received from us. We will credit all but the freight charges from your invoice.
- If the warranty item is approved for Repair, we will return the repaired item to you for your use. We will not be able to take back the new part we supplied to you as it is now used. We will bill you for the new part and suggest you store the repaired part in your inventory for future emergency use.
- If the item is denied, we will inform you and ask if you would like the item returned. The new item you received from us, as a replacement, will remain on your invoice and handled under normal billing terms.

**EXCLUSION OF LIABILITY / DAMAGES. The following is without prejudice to any right that you may have at law, which cannot legally be excluded or restricted. Except as and to the extent provided in this statement / agreement, Automation Dynamics, LLC (or related company) will NOT in any circumstances be liable for any other damages whatsoever (including, without limitation, damages for loss of business, business interruption, loss of business information or other indirect or consequential loss) arising out of the use or inability to use or supply or non-supply of the SOFTWARE and any accompanying hardware and written materials. Automation Dynamics, LLC (or related company of either) total liability under any provision of this agreement is in any case**

**limited to the amount actually paid by you for the SOFTWARE and / or CountMaster hardware. Because some states/jurisdictions do not allow the exclusion or limitation of liability for consequential or incidental damages, the above limitation may not apply to you.**

**NO OTHER WARRANTIES. To the maximum extent permitted by applicable law, Automation Dynamics, LLC and its suppliers disclaim all other warranties, either express or implied, including, but not limited to implied warranties of merchantability and fitness for a particular purpose, with regard to the SOFTWARE, the accompanying written materials, and any accompanying hardware. This limited warranty gives you specific legal rights. You may have others, which vary from state/jurisdiction to state/jurisdiction.**



# AUTHORIZATION TO MARK

This authorizes the application of the Certification Mark(s) shown below to the models described in the Product(s) Covered section when made in accordance with the conditions set forth in the Certification Agreement and Listing Report. This authorization also applies to multiple listee model(s) identified on the correlation page of the Listing Report.

This document is the property of Intertek Testing Services and is not transferable. The certification mark(s) may be applied only at the location of the Party Authorized To Apply Mark.

**Applicant:** Automation Dynamics  
605 N. High Street  
**Address:** Independence  
MO 64050  
**Country:** USA  
**Contact:** Jeff Bennett / Steve Tuombly  
**Phone:** 816-461-8989  
**FAX:** 816-461-8889  
**Email:** jrbennett@adllc.com

**Manufacturer:** Automation Dynamics  
605 N. High Street  
**Address:** Independence  
MO 64050  
**Country:** USA  
**Contact:** Jeff Bennett / Steve Tuombly  
**Phone:** 816-461-8989  
**FAX:** 816-461-8889  
**Email:** jrbennett@adllc.com

**Party Authorized To Apply Mark:** Same as Manufacturer  
**Report Issuing Office:** Lake Forest, CA

**Control Number:** 3182658

**Authorized by:** \_\_\_\_\_  
for Thomas J. Patterson, Certification Manager



This document supersedes all previous Authorizations to Mark for the noted Report Number.

This Authorization to Mark is for the exclusive use of Intertek's Client and is provided pursuant to the Certification agreement between Intertek and its Client. Intertek's responsibility and liability are limited to the terms and conditions of the agreement. Intertek assumes no liability to any party, other than to the Client in accordance with the agreement, for any loss, expense or damage occasioned by the use of this Authorization to Mark. Only the Client is authorized to permit copying or distribution of this Authorization to Mark and then only in its entirety. Use of Intertek's Certification mark is restricted to the conditions laid out in the agreement and in this Authorization to Mark. Any further use of the Intertek name for the sale or advertisement of the tested material, product or service must first be approved in writing by Intertek. Initial Factory Assessments and Follow up Services are for the purpose of assuring appropriate usage of the Certification mark in accordance with the agreement, they are not for the purposes of production quality control and do not relieve the Client of their obligations in this respect.

Intertek Testing Services NA Inc.  
545 East Algonquin Road, Arlington Heights, IL 60005  
Telephone 800-345-3851 or 847-439-5667 Fax 312-283-1672

<b>Standard(s):</b>	UL 508A Issued: 2013/12/20 Ed: 2 Rev: 2014/01/13 Industrial Control Panels CSA C22.2#14 Issued: 2013/03/01 Ed: 12 Industrial Control Equipment
<b>Product:</b>	Industrial Control Panels For General Use Industrial Control Panels For Industrial Machinery
<b>Models:</b>	Industrial Control Panels